



Water2REturn project

SaltGae – Final event

Ljubljana, Slovenia

September 25th, 2019

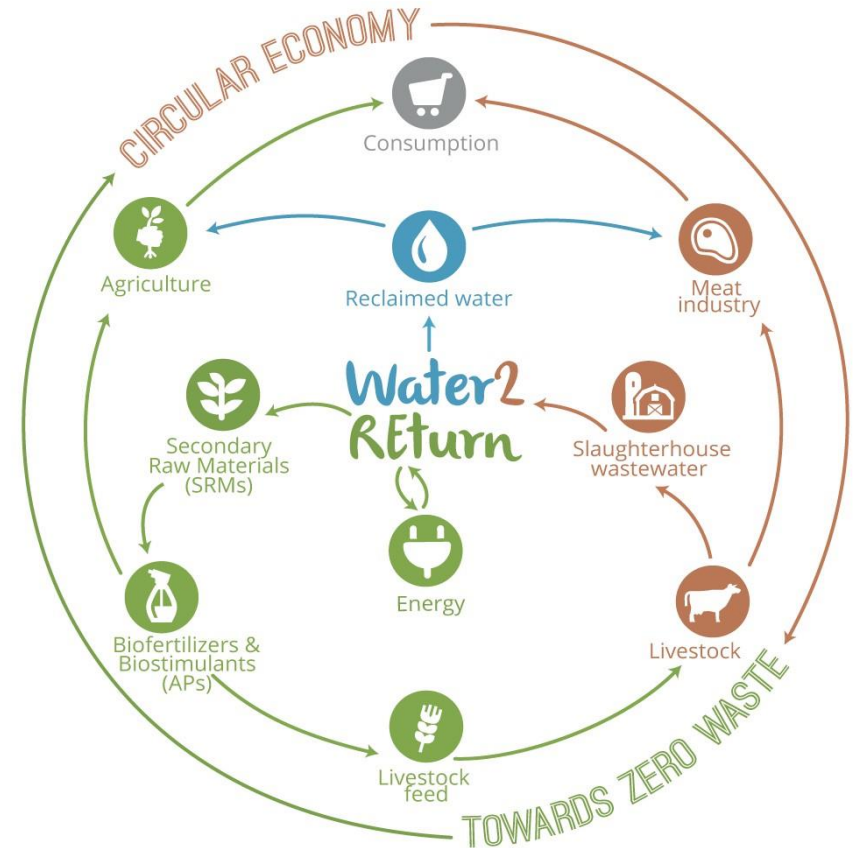
REcovery and REcycling of nutrients TURNing wasteWATER into added-value products for a circular economy in agriculture (730398)

Water2REturn in a nutshell

Integrated solution for slaughterhouse wastewater treatment;

Circular Economy approach turns wastewater treatment facilities into "bio-refineries";

The recovery of nutrients with high market value in the agricultural sector.



What will be done? Which the objectives are? When it will be achieved?

- ❑ **1 integrated treatment + nutrients & energy recovery system:**
 - 3 separated process units** (water line, sludge line, algae line) + **energy recovery module.**
- **Demonstrator treatment capacity: 50 m³ wastewater / day.**
- **Demo site: “Matadero del Sur”** slaughterhouse near Seville, Spain (wastewater daily flow: 150 m³).
- ❑ **Product valorisation for agronomic use** – formulation and optimisation of the 3 APs, field tests for agronomic efficiency, APs manufacturing.
- ❑ **Environmental, economic, social and risk assessments.**
- ❑ **End users need and market uptake at EU level** – stakeholders engagement and consultation, market potential, recommendations to EU and national regulators, business plan implementation.
- ❑ **Communication, dissemination and exploitation.**

Water2REturn objectives



Demonstrator implementation at real scale



Fertilisers and biostimulants manufacturing



Reduction of the environmental adverse effects of nutrient emissions and wastewater discharge



Reduction of landfilled waste



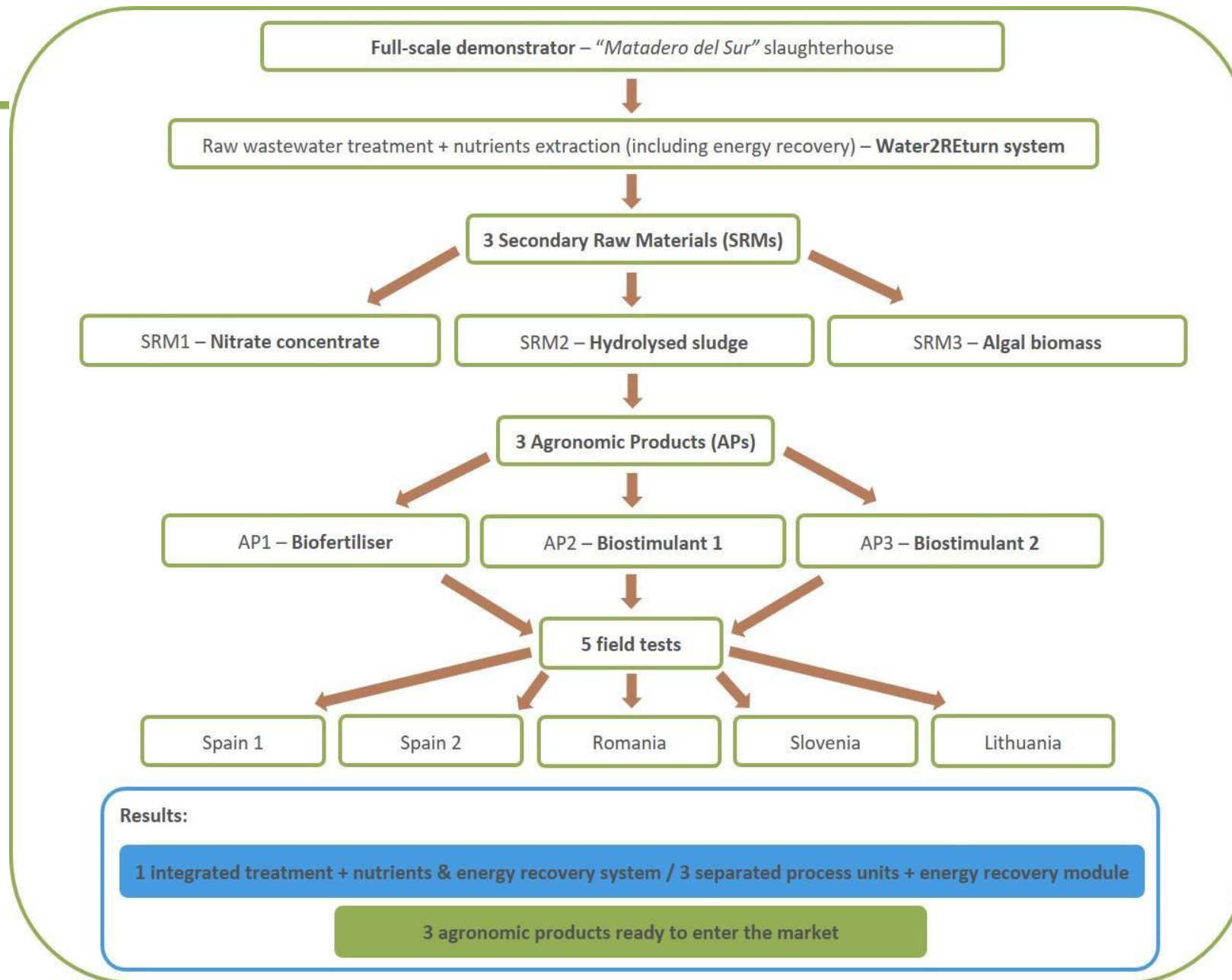
Energy self-sufficiency of slaughterhouses wastewater treatment plants



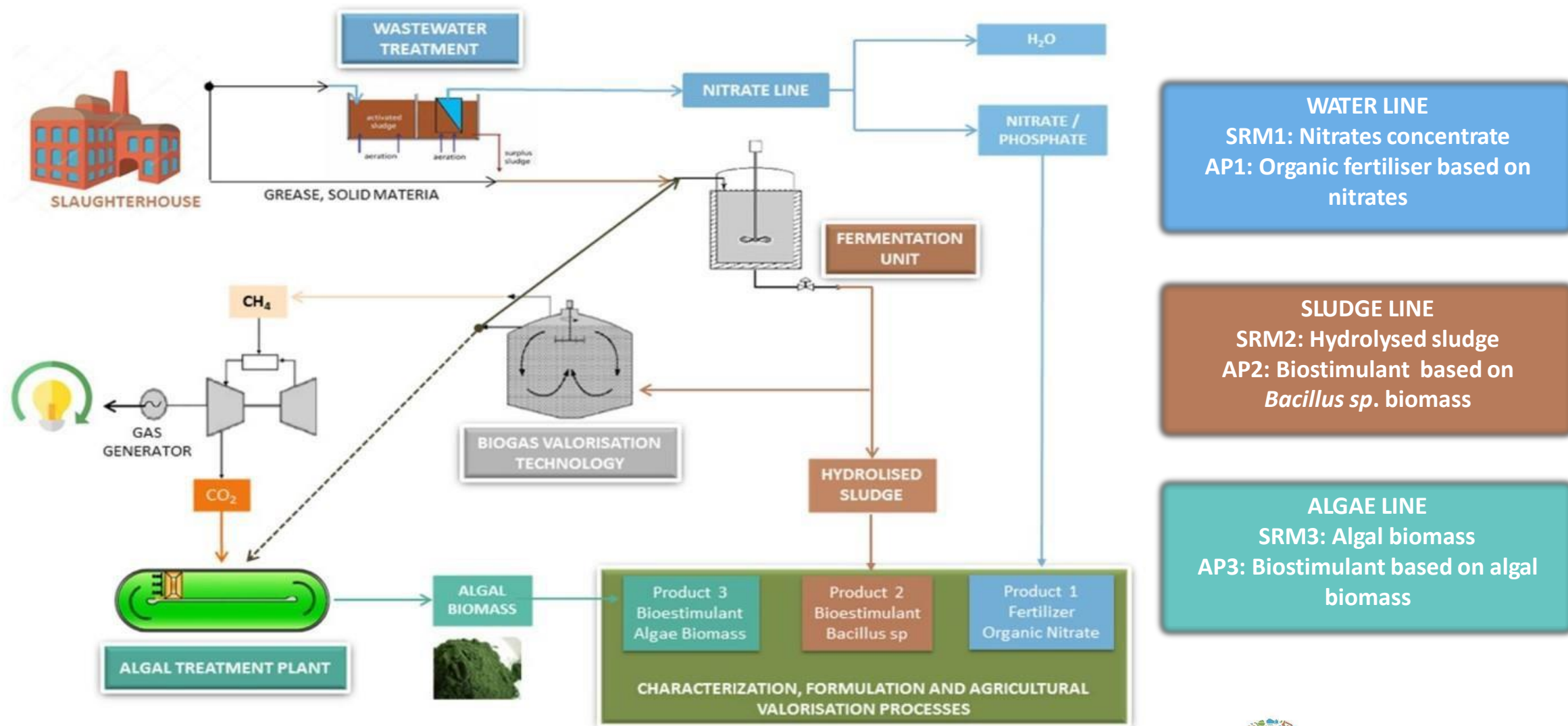
Promotion of a wide and fast market uptake of Water2REturn processes and products

Water2REturn timing

- ❑ Duration: **01/07/2017 – 31/12/2020.**
- ❑ Demonstrator installation and start-up: **from autumn 2019.**

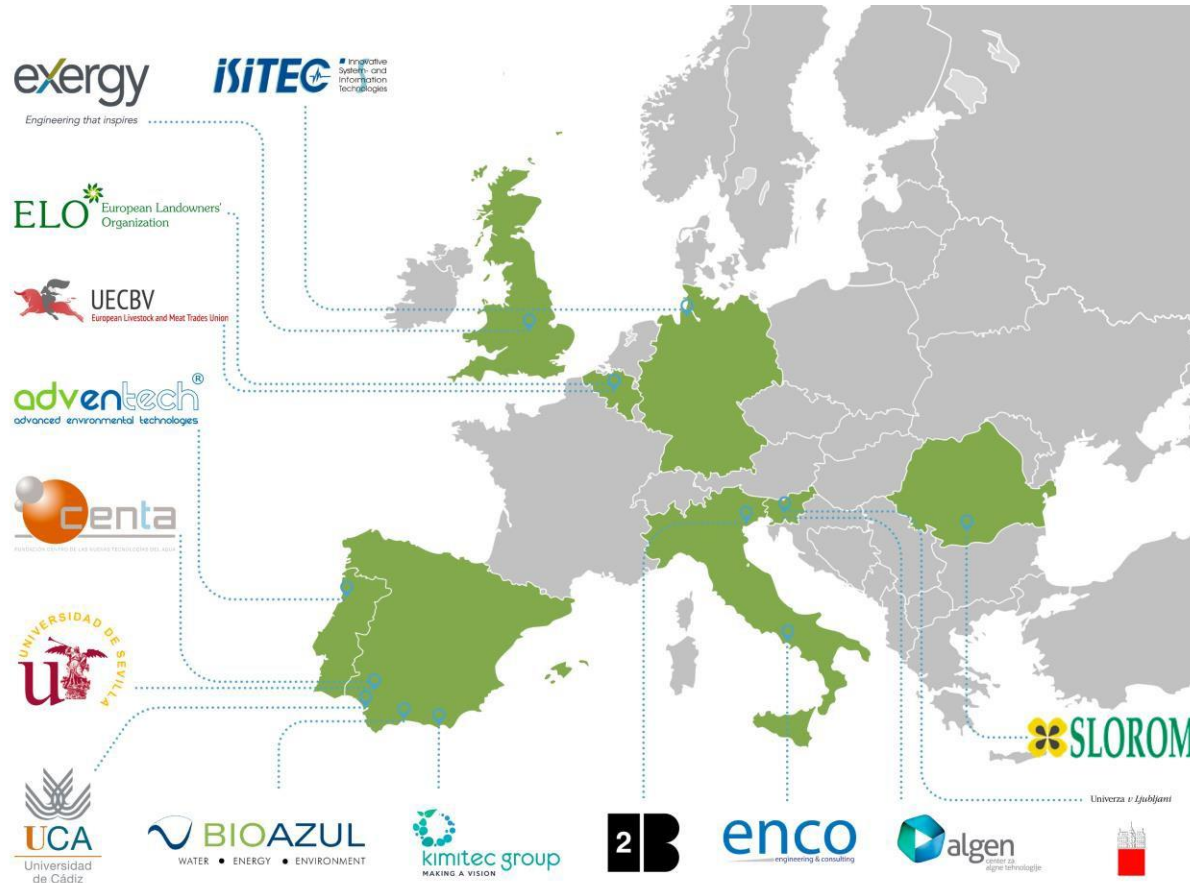


Water2REturn system



Who makes Water2REturn possible? Whom is Water2REturn for?

Water2REturn consortium



Initial target customers:

- ❑ Slaughterhouses industry → *early adopters*.
- ❑ Meat processing industry.
- ❑ Bioagronomic products' distributors.
- ❑ Agricultural sector → *conventional and organic farmers*.



Project Coordinator:

Pilar Zapata Aranda, BIOAZUL S.L. (Malaga, Spain)

tel: +34 951 047 290

pzapata@bioazul.com · www.bioazul.com



This project has received funding from the European Union's H2020 Research & Innovation programme under grant agreement N° 730398



Thanks for your attention!

Dr. Rok Mihelič
University of Ljubljana
Slovenia

rok.mihelic@bf.uni-lj.si



YouTube

@Water2REturn



#Water2REturn

www.water2return.eu

